

S912

# DIY mini house kits - Blueberry Soda



S912 Instruction manual

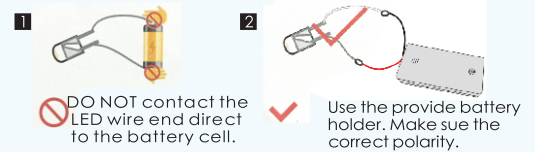
# NOTICE OF ASSEMBLE

## Tips for assembling

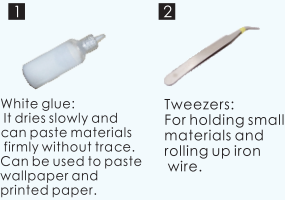
1. Pictures shown on the package may be slightly different from the actual product.
2. All the materials are taken in the operation step, put the remaining materials back into the original pocket until the installation is completed. (Avoid material loss during installation)
3. The dimensions indicated in the step diagram are "cm".
4. If there have template paper material, please cut the material according to the template to avoid mistakes..
5. According to the part rule example at the bottom of this page, refer to the part on the part number drawing, find the material object and compare with the material list, confirm and install. (Wooden parts only)
6. Glue should not be applied too much, so as not to dry longer, overflow will affect the effect of the finished product.
7. Part shapes may differ from the photographs depending on the production batch

## Testing on LED function

Be sure to test the LED lights before making the lighting, note that the LED white wire to the negative, gray wire to the positive reference to the following figure operation test.



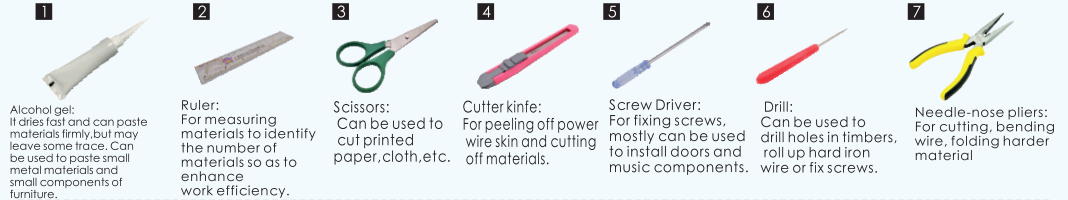
## Product comes with tool:



**1**  
White glue:  
It dries slowly and can paste materials firmly without trace. Can be used to paste wallpaper and printed paper.

**2**  
Tweezers:  
For holding small materials and rolling up iron wire.

## Bring your own tools:



**1**  
Alcohol gel:  
It dries fast and can paste materials firmly, but may leave some trace. Can be used to paste small metal materials and small components of furniture.

**2**  
Ruler:  
For measuring materials to identify the number of materials so as to enhance work efficiency.

**3**  
Scissors:  
Can be used to cut printed paper, cloth, etc.

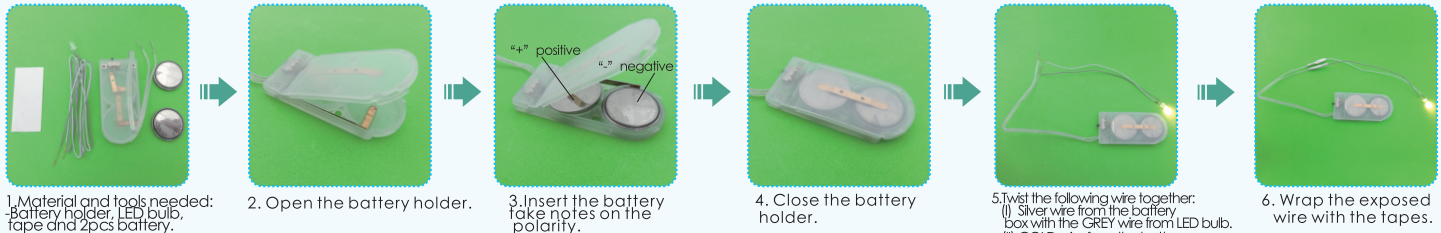
**4**  
Cutter knife:  
For peeling off power wire skin and cutting off materials.

**5**  
Screw Driver:  
For fixing screws, mostly can be used to install doors and music components.

**6**  
Drill:  
Can be used to drill holes in timbers, roll up hard iron wire or fix screws.

**7**  
Needle-nose pliers:  
For cutting, bending wire, folding harder material

## How to assemble the battery holder



**1** Material and tools needed:  
Battery holder, LED bulb, tape and 2pcs battery.

**2** Open the battery holder.

**3** Insert the battery take notes on the polarity.

**4** Close the battery holder.

**5** Twist the following wire together:  
(I) Silver wire from the battery box with the GREY wire from LED bulb.  
(II) GOLD wire from the battery box with the WHITE wire from LED bulb.

**6** Wrap the exposed wire with the tapes.

## Example of parts rule:

A01: The parts are directly in the box.; B01: parts in bag B; C01: part in bag C, and so on.  
(Note: display the printing paper A09-01 in the step: the printing paper is placed directly in the box, part number is A09-01)



Assemble method for one LED wire connect to battery holder.

Assemble method for more than one LED wire connect to battery holder.

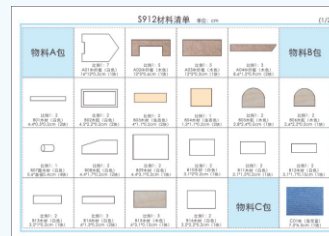
## details of miniature kit

Name	Material package
printing paper	Bag A-A05(All printing and template papers are shown on A05 paper, total 2piece of A5 )
window	B bag + C bag + printing paper
bookcase	B bag + printing paper
sofa	B bag + C bag + printing paper
bed	B bag + C bag + printing paper
floor lamp	C bag
wall deco	printing paper
drawing	printing paper
drawing-box	printing paper
outer frame	A bag + printing paper
battery holder	D bag



Welcome to the little DIY world, now come with me!

## Thumbnail of material list (reference only)



## Thumbnail of printing paper & template paper (reference only)



## Symbol description used



Install parts in the opposite direction



Install the same parts on both sides



Pay attention to the direction of installation material B



Fold in half according to dotted line



fold double edge to center dotted line



Fold four sides to the middle



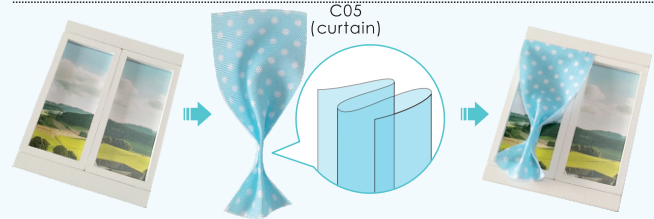
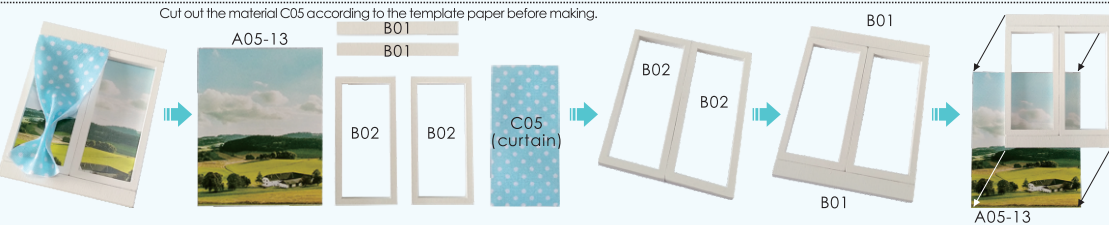
Pay attention to the direction of installation material A



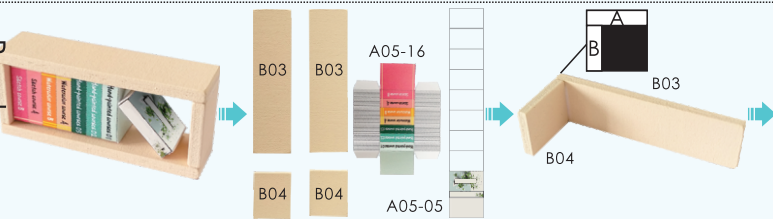
combination part according to so on.



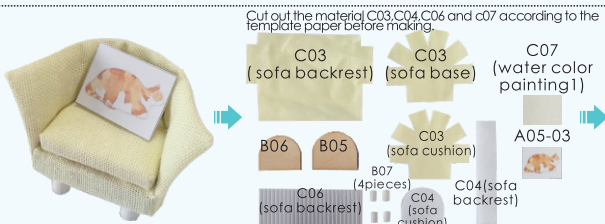
Window

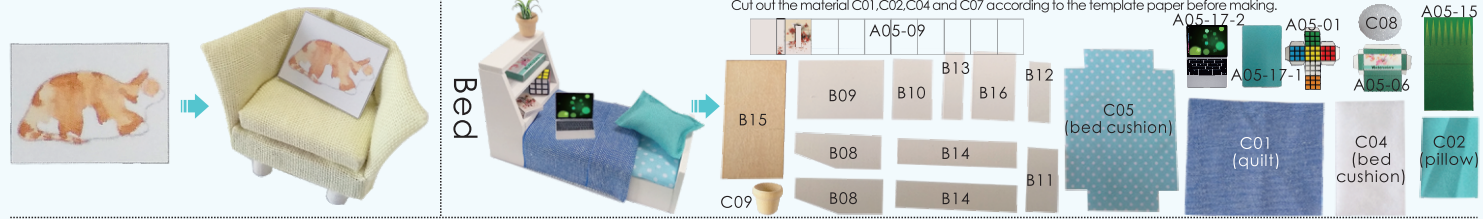
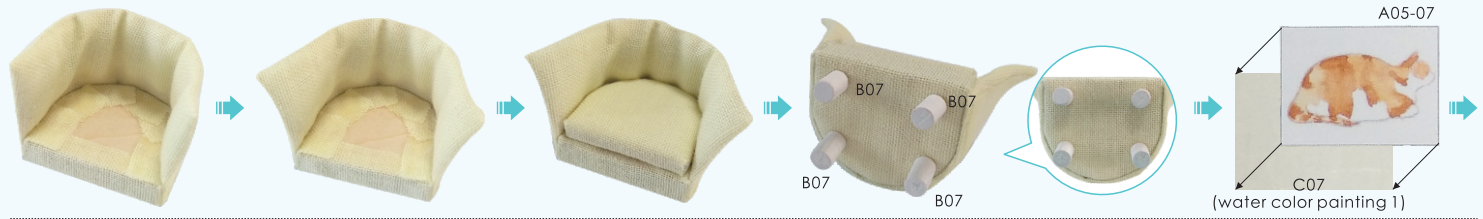
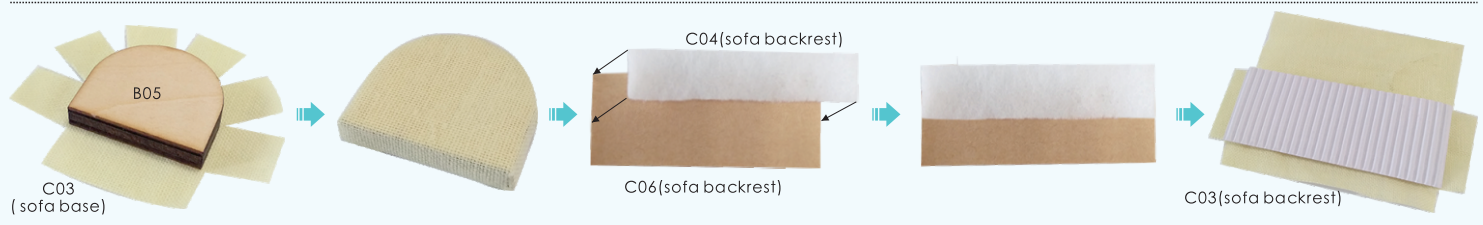


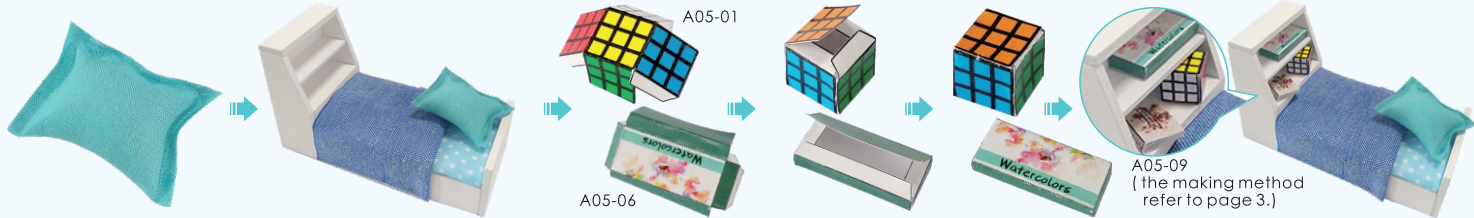
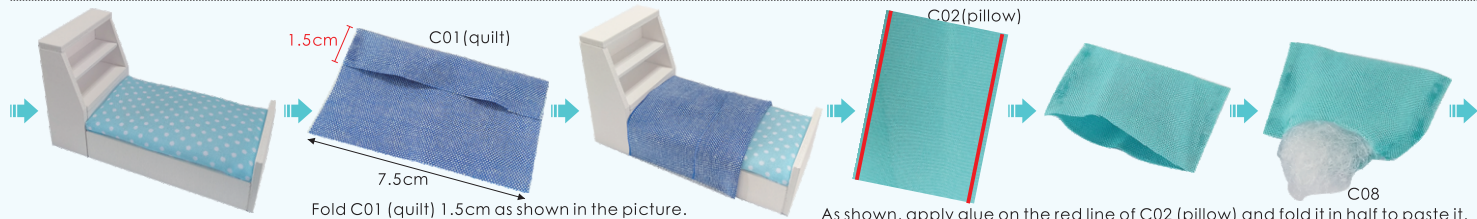
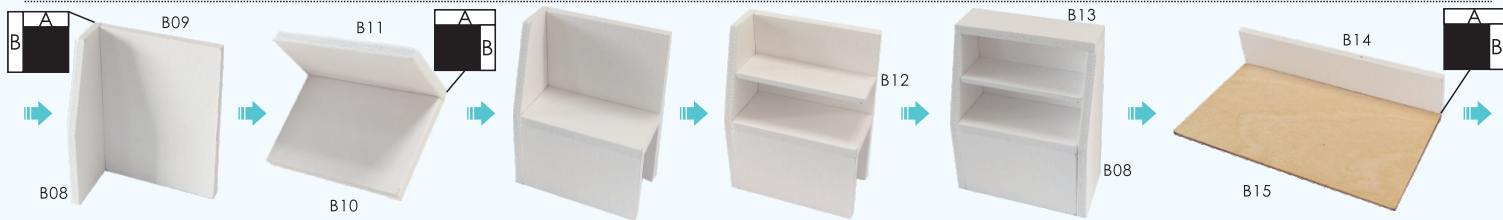
Bookcase

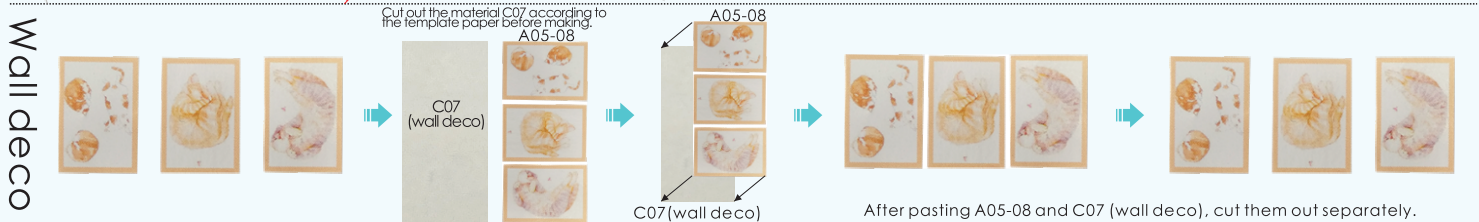
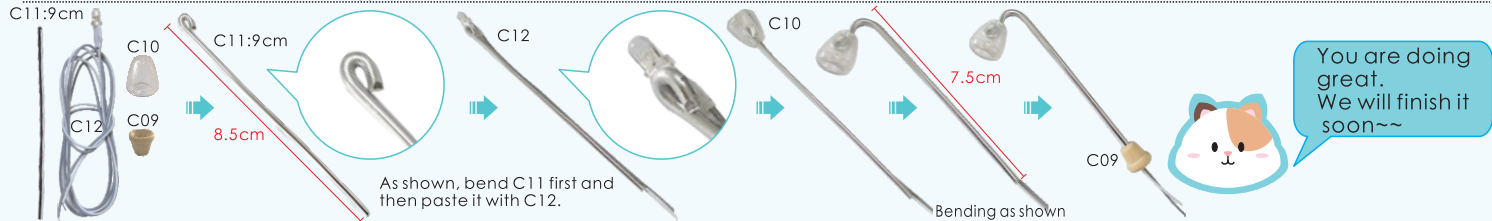
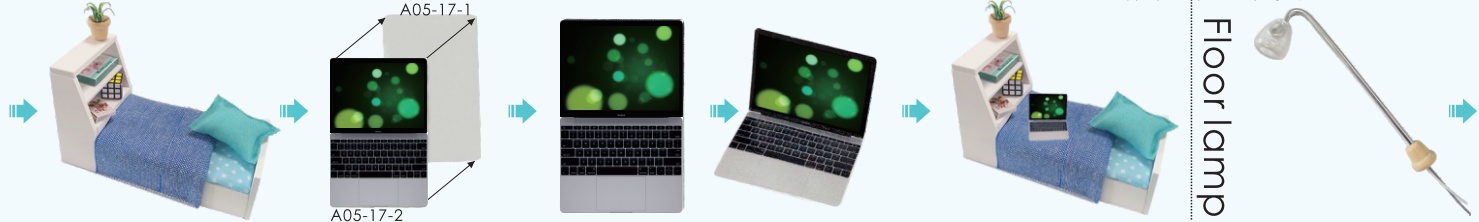
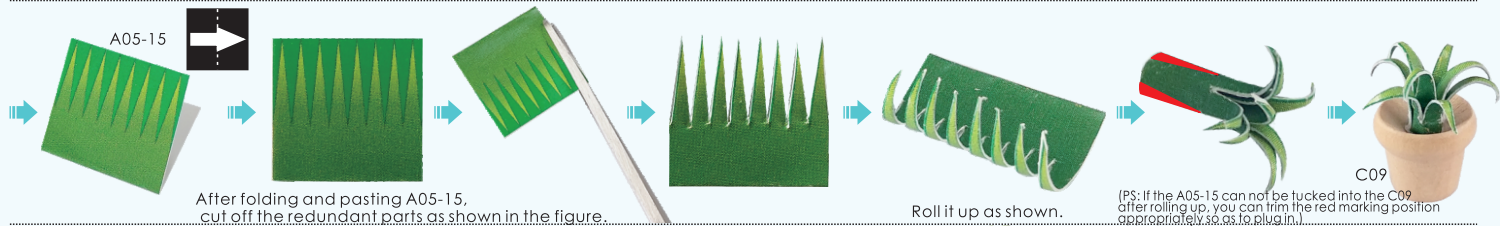


Sofa

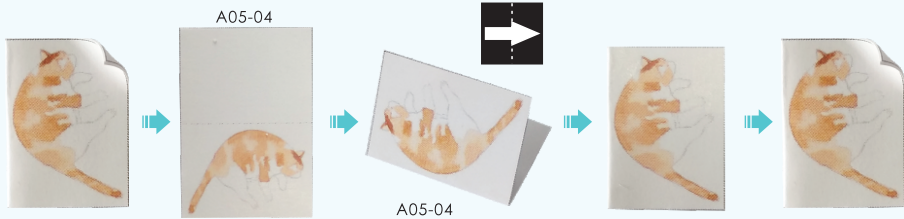






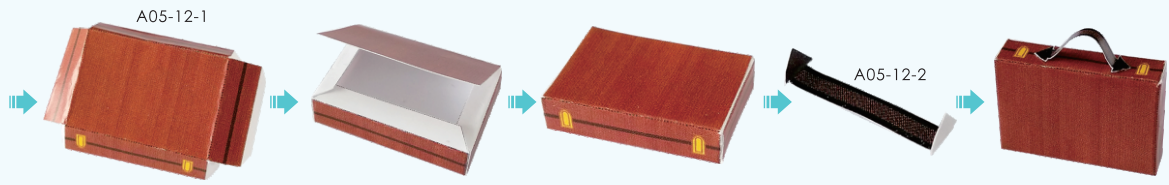
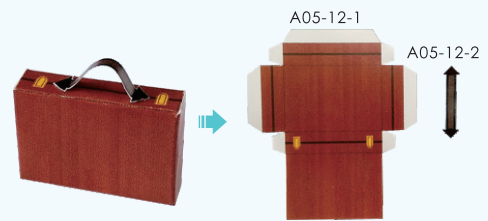


Drawing

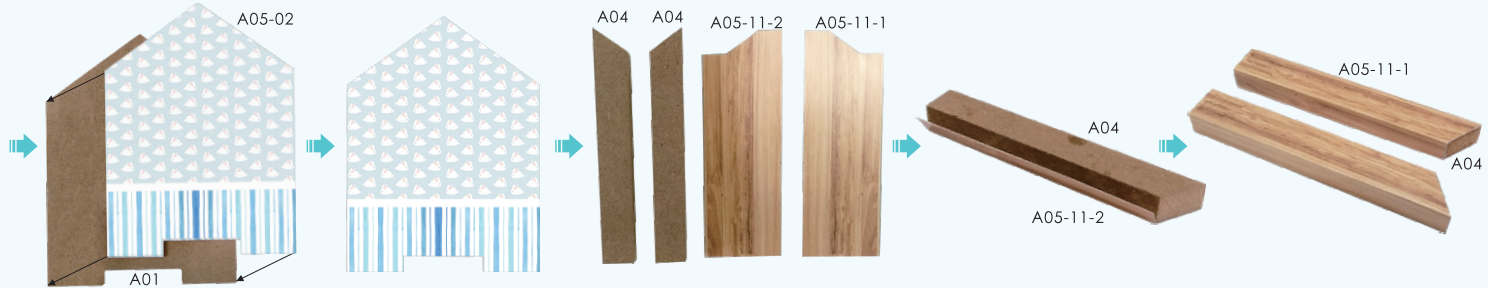


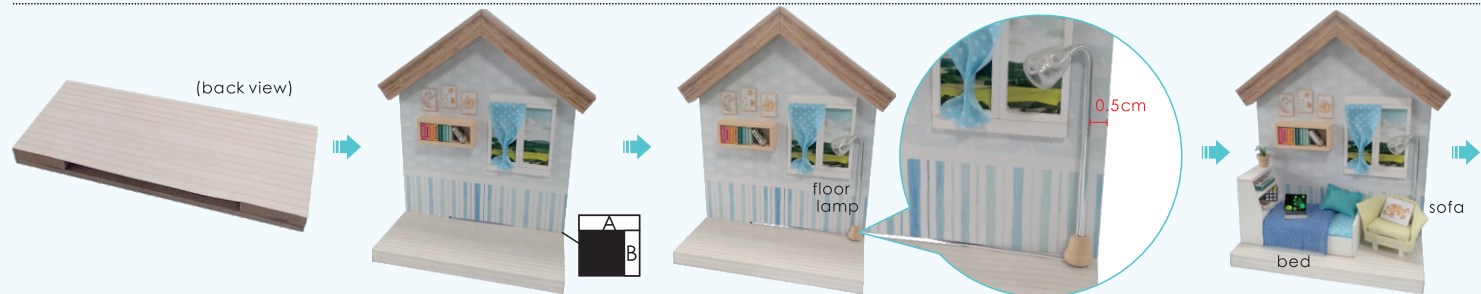
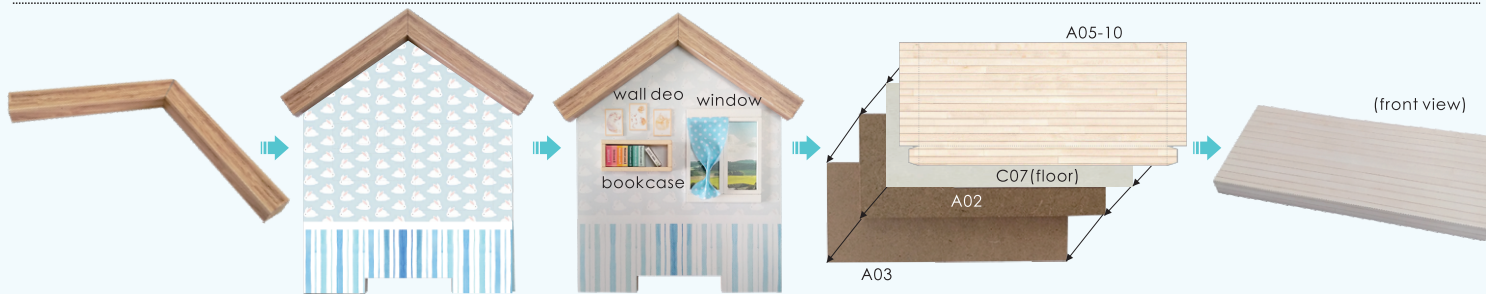
After folding and pasting A05-04, micro-roll the upper right corner as shown in the figure.

Drawing-box



Outer frame





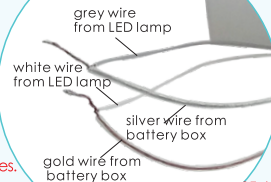
### How to assemble the battery holder

Statement: the lamp wires cannot be inserted into the output socket.

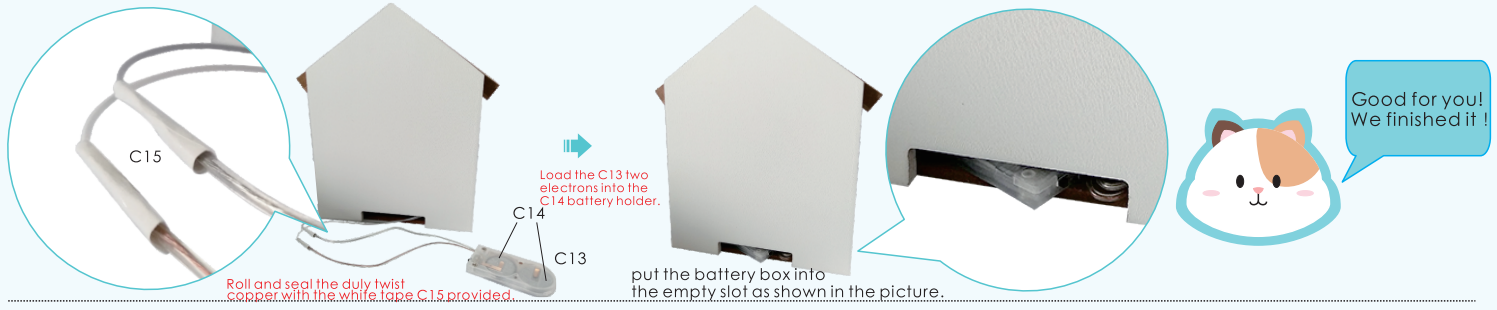
- Can use 3V button batteries
- Please notice the place of anode and cathode when put in the batteries
- Rechargeable batteries are not blunt electricity
- Rechargeable batteries can only be charged under adult supervision
- Rechargeable batteries should be removed from the toy before charging
- Different types of batteries cannot mix;
- Do not mix new batteries in use with semi-used batteries.
- Run out of battery should be removed from the toy
- The power shall not be short circuit

1. Trim all the LED wiring to the same length.

2. Use a craft blade to carefully skim over the plastic to bare the copper wire. Twist the same color wire together.



3. Twist the following wire together:  
 (I) Silver wire from the battery box with the GREY wire from LED bulb.  
 (II) GOLD wire from the battery box with the WHITE wire from LED bulb.



---

## Photo Gallery





Attention: Please keep the instruction for future enquires after installation.